



EYWA

TINY HOMES



Bespoke Tiny Homes, delivered Australia-wide.

Built with Heart & Heritage.

Hearthwood | 11x3m

"Welcome

Step into The Hearthwood — our grandest and most impressive design, where spaciousness and elegance redefine tiny home living. At 11 metres long and crowned with soaring cathedral ceilings, this model offers a sense of scale and openness rarely seen in compact homes.

The ground floor layout features a beautifully appointed bedroom with built-in robes, complemented by an expansive kitchen and full-sized bathroom. Every inch is designed for practicality and comfort, while generous windows invite in streams of natural light and frame your surroundings with ease.

Above, a versatile loft with twin skylights creates the perfect retreat — whether for guests, work, or quiet reflection. Clever storage solutions throughout ensure that no space is wasted, blending function with thoughtful design. With its combination of grandeur, warmth, and adaptability, The Hearthwood is more than just a home — it's a sanctuary. And like every EYWA model, it can be customised to reflect your personal style and way of life.





Ground bed

1x Ground Bedroom with BIR

1x Secondary loft



Dimensions

Length - 11m

Width - 3m

Height - 4.25m



Features

All EYWA models come with high-end inclusions as standard, offering you greater peace of mind and lasting enjoyment.

Architectural Nailstrip &

Western Red Cedar external cladding

Genuine Timber internal lining throughout

Lead Light Feature Window and Pendant Light

Brass Tapware and Fittings throughout

Earthwool Insulation throughout

Cathedral Ceiling

2x Skylights over loft for star gazing at night

Large Windows and natural lighting

Secondary Loft

Expansive living area encompassing kitchen & dining

Custom cabinetry and shelves to kitchen/living

European laundry and storage to bathroom

Designed to maximise usability and space throughout



Standard Inclusions

Trailer

10 tonne GVM

Duragal frame - Tri Axle

VIN & Compliance plate

ABS brakes

Rear lights

Adjustable Landing legs on all 4 corners

Electrical and Appliances

Weatherproof 8 mod safety switch board

Power Inlet - 2x 15 amp lead connection

Smoke detector alarm to living/kitchen areas

Exhaust fan in the bathroom

Lights - LED down lights x 9

2x outdoor brass pebble lights

Power points - Standard double x 8,
Weatherproof double x 1

Hot water unit - Rinnai B16

Rangehood - 60cm

Westinghouse 55cm freestanding
gas cooktop oven

Dishwasher

3.5kw Split system Air conditioner

Certificate of electrical compliance

Fittings, Tapware & Plumbing

Black composite kitchen sink with drip tray

Bathroom vanity mirror 600mm x 450mm

Choice of composting toilet system or flushing toilet

Acrylic shower base 860mm x 900mm

3 panel sliding shower screen

Brass tapware fitted throughout to all sinks and shower

Marble or stone bathroom sink 40cm

Certificate of plumbing compliance

Frame and Construction

Light gauge truecore steel frame

5x Aluminium windows and 1x Sliding door

2x VELUX Skylights over loft

Fly screens to all windows and doors

2x Stained glass feature windows

Sliding cavity door to bathroom

Nailstrip colorbond steel cladding in classic
colours, With cedar weatherboards to 3m ends.

Colorbond corrugated roofing and matching
flashing, gutters and fascia in classic colours

Pine lining boards throughout to ceiling and walls

Tiled splashback and walls to bathroom as per design

Tiled bathroom floor

Water inlet and gas regulator fitted

Insulation to all walls and ceiling and underfloor

Joinery & Finishes

Custom kitchen cabinets and shelves as per design.

Soft close hinges and draw runners to all
cabinet doors and drawers

Custom bathroom joinery and shelves per design

Timber bench tops throughout kitchen and bathroom

Custom joinery/shelves as per design to lounge room

Storage cabinet to bathroom with shelves and space
for washing machine as per design

Built in robes to bedroom with shelves as per design

Scotia pine moulding cornices throughout

Colonial Architraves throughout

Ladder installed for access to loft

Premium plush carpet installed to loft

Timber flooring throughout

Brass curtain rails and curtains installed throughout

Upgrades & Extra's

Off grid solar system - \$21,500

Stone Counter tops - POA

Coonara fireplace - \$2,750

Brass ceiling fan - \$650

Timber colonial windows - \$3,950

4m x 1.8m Decking & Steps rear - \$1,1350

1.8m x 1.2m Decking & Steps front - \$550

Electric Oven - \$450

Upgrade to Cedar Shingles on ext Ends - \$1,450

Extra Cedar Feature Cladding Shingles - \$1,450

Extra Cedar Feature Cladding W/Boards - \$550

Fridge/Freezer - \$850

Additional Lead light Windows to Loft(s) - POA

*POA ~ Price on application

How to Buy an Eywa Tiny Home



When choosing a tiny house, consider your needs and preferences. With a wide variety of sizes, styles, and amenities available, finding the right one is crucial. Whether it's for personal use, renting it out on Airbnb, accommodating a family member, or serving as a granny flat, the purpose of your tiny home should influence your decision. Keep in mind your intended usage and plan accordingly.

To receive a quote, please make a request by providing your preferred model and the specific inclusions you desire. Once we have this information, we will prepare a comprehensive package with the final price for your consideration.

To place your order, simply sign the purchase contract and submit a 10% deposit payment.



Our Process & Guarantee



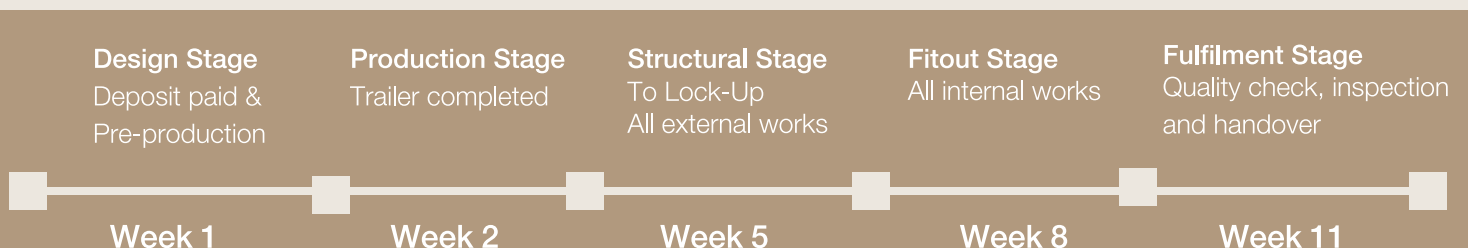
Delivered within 11 weeks.
Built by licensed and qualified trades.
& a 3 year warranty.

Warranty: Every tiny home we build is backed by our 3-year structural warranty, along with a 1-year warranty on all fittings and fixtures. This means you can move in with complete confidence, knowing your investment is protected and every detail is built to last. It's our way of giving you peace of mind long after the keys are handed over.



Qualified and Licensed: All of our work is carried out and signed off by fully qualified, licensed tradespeople, giving you confidence in the quality and safety of your home. Every electrical installation comes with a Certificate of Electrical Compliance and Safety, and all plumbing work is certified to industry standards. With every detail professionally approved, you can trust that your tiny home is built to the highest level of compliance and care.

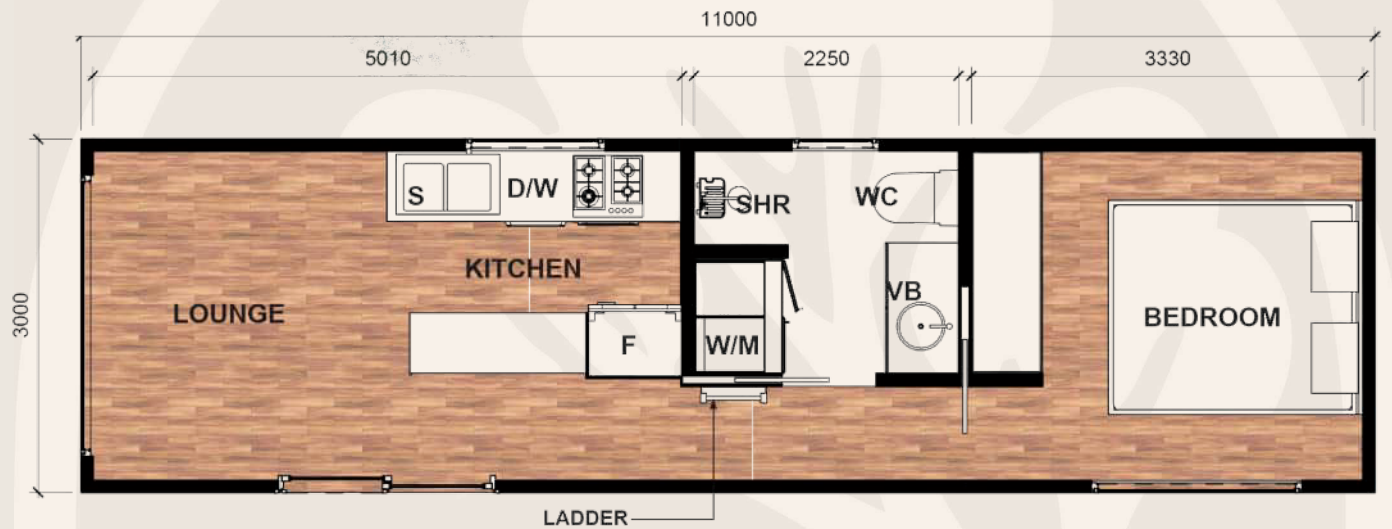
Our Building Process: Our building process is managed from start to finish by licensed carpenters, ensuring expert craftsmanship at every stage. From the moment construction begins, your tiny home is completed within 11 weeks. To keep you connected throughout the journey, we provide weekly updates and, if requested, video calls so you can see the progress firsthand. With open communication and skilled oversight, you'll always feel confident and involved as your new home takes shape.



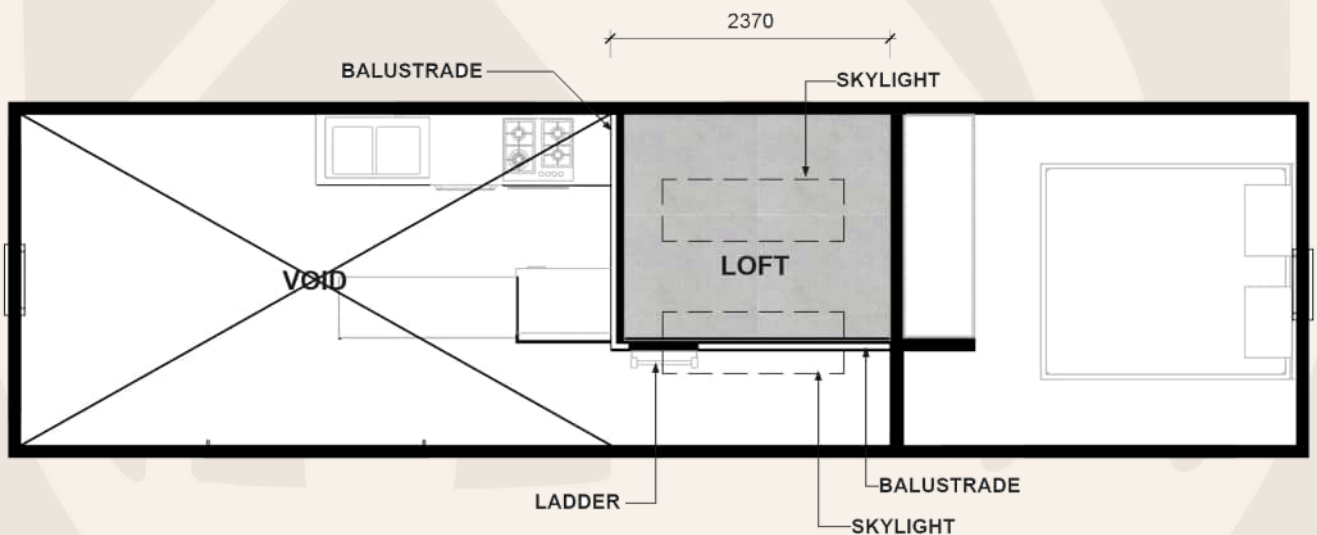
Please note that certain images featured in this brochure showcase non-standard inclusions. Decks and external structures, while not included in the standard configuration of our models, can be added upon consultation with a sales consultant. We encourage you to reach out to our knowledgeable team for further clarification and to discuss your specific requirements.

Floorplan

Ground Level



Upper Level



Price

Home Tree = \$179,000

Our display is located in VIC 45 minutes from the CBD



www.eywa.com.au

0422 805 063

eywa.co@outlook.com

follow us -

@eywa.tinyhomes

Eywa Tiny Homes

**Our Display is located at;
Cockatoo VIC 3782**

